

GENERAL NOTES:

- THIS DRAWING IS TO BE READ IN CONJUNCTION WITH ALL RELEVANT ARCHITECTS AND ENGINEERS DRAWINGS AND SPECIFICATIONS.
- DO NOT SCALE THIS DRAWING. ANY AMBIGUITIES, OMISSIONS AND ERRORS ON DRAWINGS SHALL BE BROUGHT TO THE ENGINEERS ATTENTION IMMEDIATELY. ALL DIMENSIONS MUST BE CHECKED / VERIFIED ON SITE.
- ALL DIMENSIONS ARE IN MILLIMETRES UNLESS NOTED OTHERWISE.
- FOR GENERAL NOTES REFER TO DRAWING.
- ALL FOUL DRAINAGE WORKS TO BE IN ACCORDANCE WITH IRISH WATERS' CODE OF PRACTICE FOR WASTEWATER SUPPLY AND WASTEWATER INFRASTRUCTURE STANDARD DETAILS.
- FOUL SEWERS TO BE THERMOPLASTIC STRUCTURED WALL PIPES (COMPLYING WITH THE PROVISION OF IS EN 13476 AND WIS 4-35-01 2000 AND COMPLY WITH THE REQUIREMENTS OF THE IRISH WATER CODE OF PRACTICE.
- WATERMAIN INSTALLATION AND ALL WATER SUPPLY WORKS TO BE IN ACCORDANCE WITH THE REQUIREMENTS OF IRISH WATERS CODE OF PRACTICE FOR WATER SUPPLY AND WATER INFRASTRUCTURE STANDARD DETAILS.
- WATERMANS TO BE TYPE HPPE, PE-100, SDR-17 RATED AND SHALL CONFORM TO IS EN 12201 (PART 1, PART 2, & PART 3).
- WATERMAIN SERVICE CONNECTION PIPES TO BE HDPE (PE-80) MATERIAL WITH SDR-17 RATING).

MINIMUM MANHOLE DIAMETER "D"	
DIAMETER OF LARGEST PIPE IN MANHOLE (mm)	INTERNAL DIAMETER OF MANHOLE (mm)
LESS THAN 375	1200
375 TO 450	1350
500 TO 750	1500

ROCKER PIPE LENGTH	
PIPE DIAMETER (mm)	ROCKER PIPE LENGTH (mm)
150 TO 600	600
GREATER THAN 600 TO 750	1000
GREATER THAN 750	1250

NORMAL PIPE DIAMETER (mm)	100	150	225	300	375	450	525	600	750	900	1050	1200	1350
TRENCH WIDTH MIN (mm) (W)	450	500	600	700	850	1050	1150	1250	1400	1950	2100	2300	2450
TRENCH WIDTH MAX (mm) (W)	650	700	800	900	1150	1250	1350	1450	1600	2150	2300	2500	2650

TRENCH WIDTHS-FLEXIBLE PIPES

NOMINAL PIPE DIAMETER (mm)	100	150	200	250	300
TRENCH WIDTH MIN (mm) (W)	450	450	600	700	700
TRENCH WIDTH MAX (mm) (W)	600	600	700	700	850

DIMENSIONS-"bc"

NOMINAL PIPE DIAMETER (mm)	100-450 incl.	525-600 incl.	750	900	1050	1200
bc (mm)	100	150	200	225	250	300

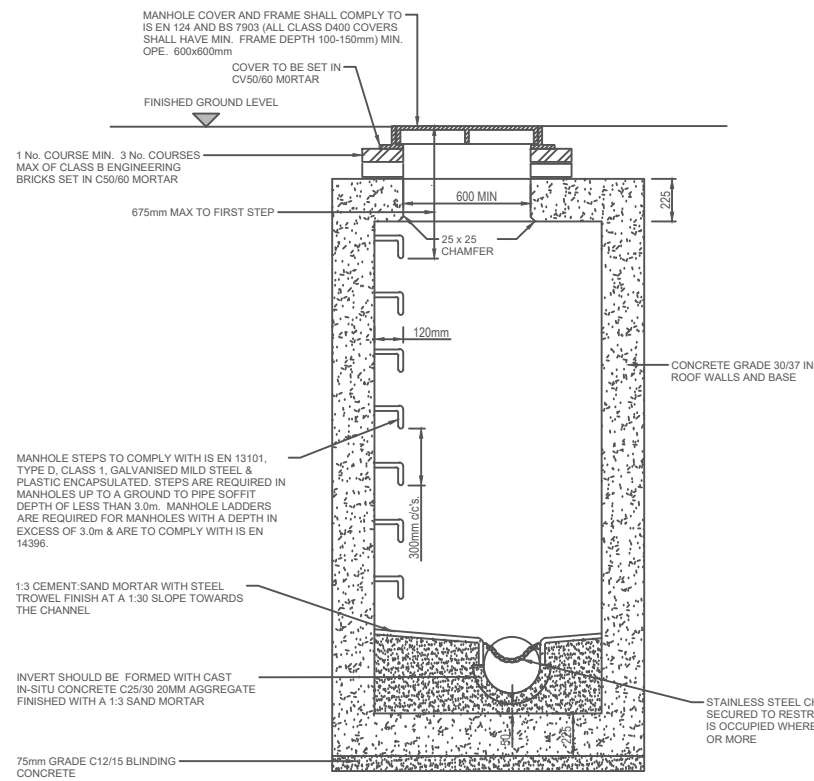
DIMENSION-"b"	PIPES UP TO AND INC. 600mm DIA	PIPES GREATER THAN 600mm DIA
UNIFORM SOIL	100mm	200mm
ROCK	200mm	300mm

TYPE "A" MATERIAL:

- BROKEN STONE OR GRAVEL, GRADING AS FOLLOWS:-
- RIGID PIPES - PIPE DIAMETER UP TO AND INCLUDING 600mm
 - SIEVE SIZE GREATER THAN 5mm AND LESS THAN 12mm
 - PIPE DIAMETER GREATER THAN 600mm DIA
 - SIEVE SIZE GREATER THAN 5mm AND LESS THAN 19mm
 - FLEXIBLE PIPES : SIEVE SIZE GREATER THAN 5mm AND LESS THAN 10mm

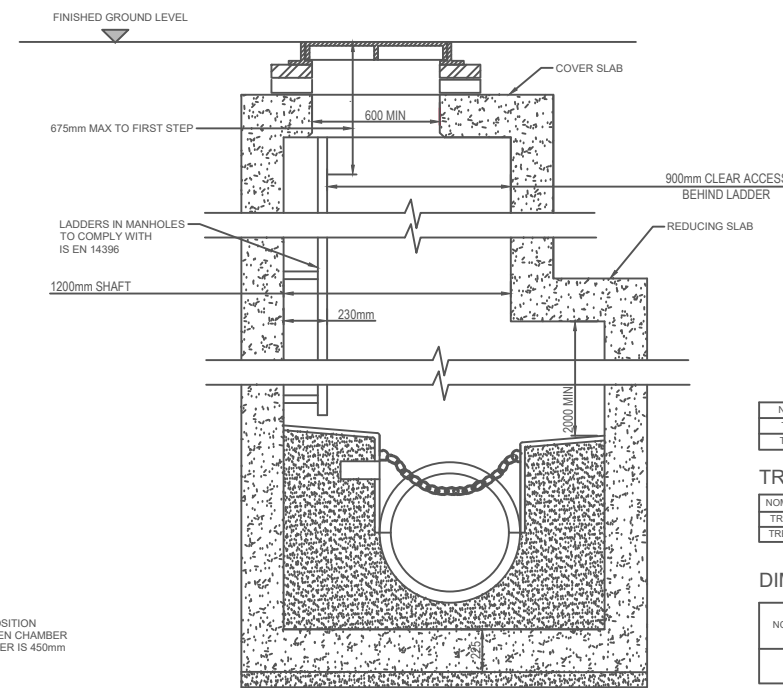
TYPE "B" MATERIAL:

SELECTED FILL UNIFORM READILY COMPACTABLE MATERIAL
 FREE FROM : CLAY LUMPS RETAINED ON 75mm SIEVE, STONES RETAINED ON 25mm. SIEVE, TREE ROOTS, VEGETABLE MATTER, BUILDING RUBBISH AND FROZEN SOIL.



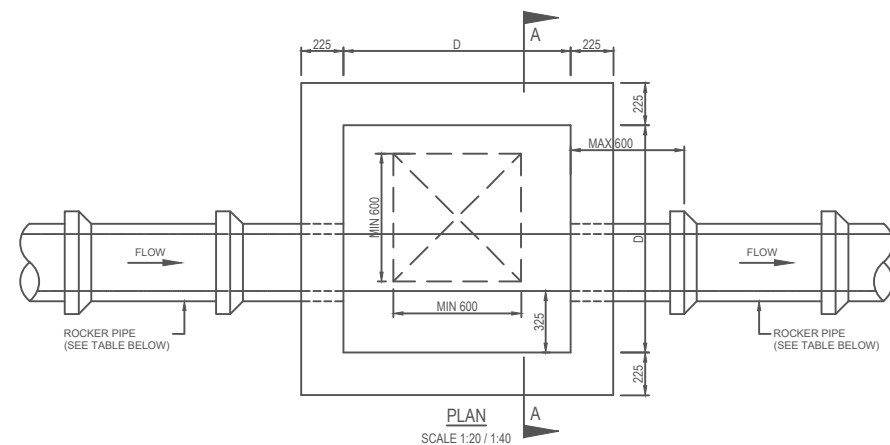
IN-SITU CONCRETE MANHOLE (SDDC AREA)

SECTION A-A
SCALE 1:20 / 1:40

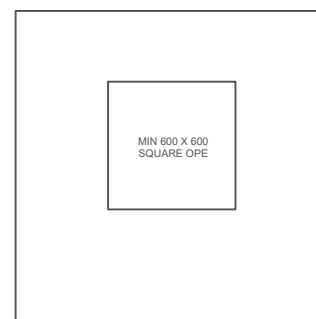


IN SITU CONCRETE MANHOLE MANHOLE DETAIL >3m AND < 6m GROUND TO PIPE SOFFIT DETAIL (SDDC AREA)

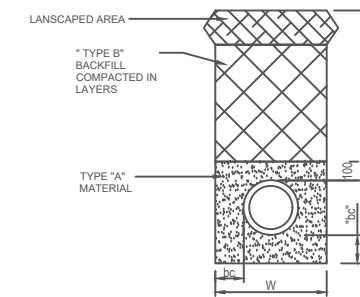
(NOTE: ON MANHOLES <1.5m SHAFT DIMENSION, REDUCING SLAB NOT TO BE USED & SHAFT TO CONTINUE UP TO COVER SLAB)



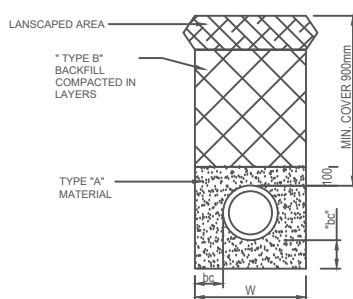
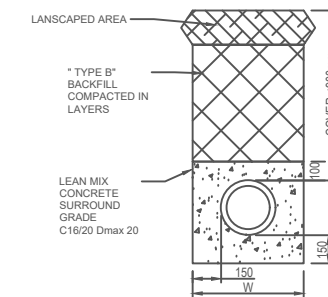
TRENCH WIDTHS-RIGID PIPES



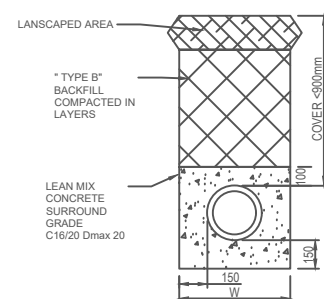
ROOF PLAN
SCALE 1:20 / 1:40



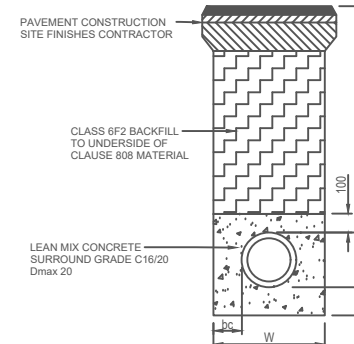
UNPAVED AREAS



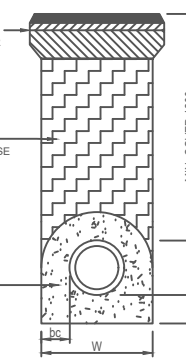
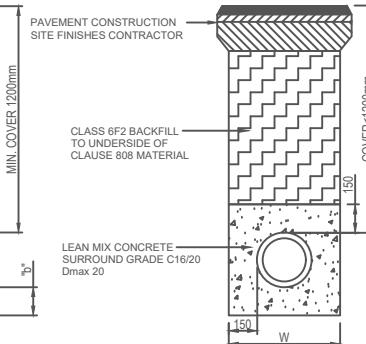
UNPAVED AREAS



PIPE TRENCH DETAILS
SCALE 1:20

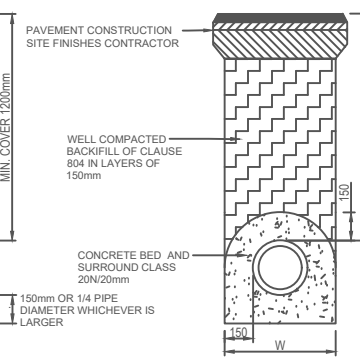


PAVED AREAS



PAVED AREAS

PIPE TRENCH DETAILS (SDDC AREA)
SCALE 1:20



P04	ISSUED FOR PLANNING	11.12.20	GS	DH
P03	ISSUED FOR PLANNING	12.11.19	JC	GS
P02	ISSUED FOR PLANNING	19.09.19	JC	AC
P01	ISSUED FOR INFORMATION	19.08.19	GS	AC
Rev:	Description:	Date:	By:	Chkd:



11 Pembroke Lane, Dublin 2, D02 CX82
 +353 (0)1 507 9447
 dublin@curtins.com
 www.curtins.com

Civils & Structures • Transport Planning • Environment • Infrastructure • Geotechnical • Conservation & Heritage • Principal Designer
 Birmingham • Bristol • Cambridge • Cardiff • Dublin • Edinburgh • Glasgow • Kenton • Leeds • Liverpool • London • Manchester • Nottingham

ISSUED FOR INFORMATION **S2**

GLEN ABBEY

PROPOSED SITE SERVICES DETAILS
SHEET 1 OF 4

Size:	Date:	Drawn By:	Designed By:	Checked By:
A1/A3	19/08/19	GS	AC	DH
Scale:	AS SHOWN			
Project No:	Originator:	Zone:	Level:	Type: Discipline: Category / Number: Rev:

072414 - CUR - 00 - XX - DR - C - 90002 -P04