

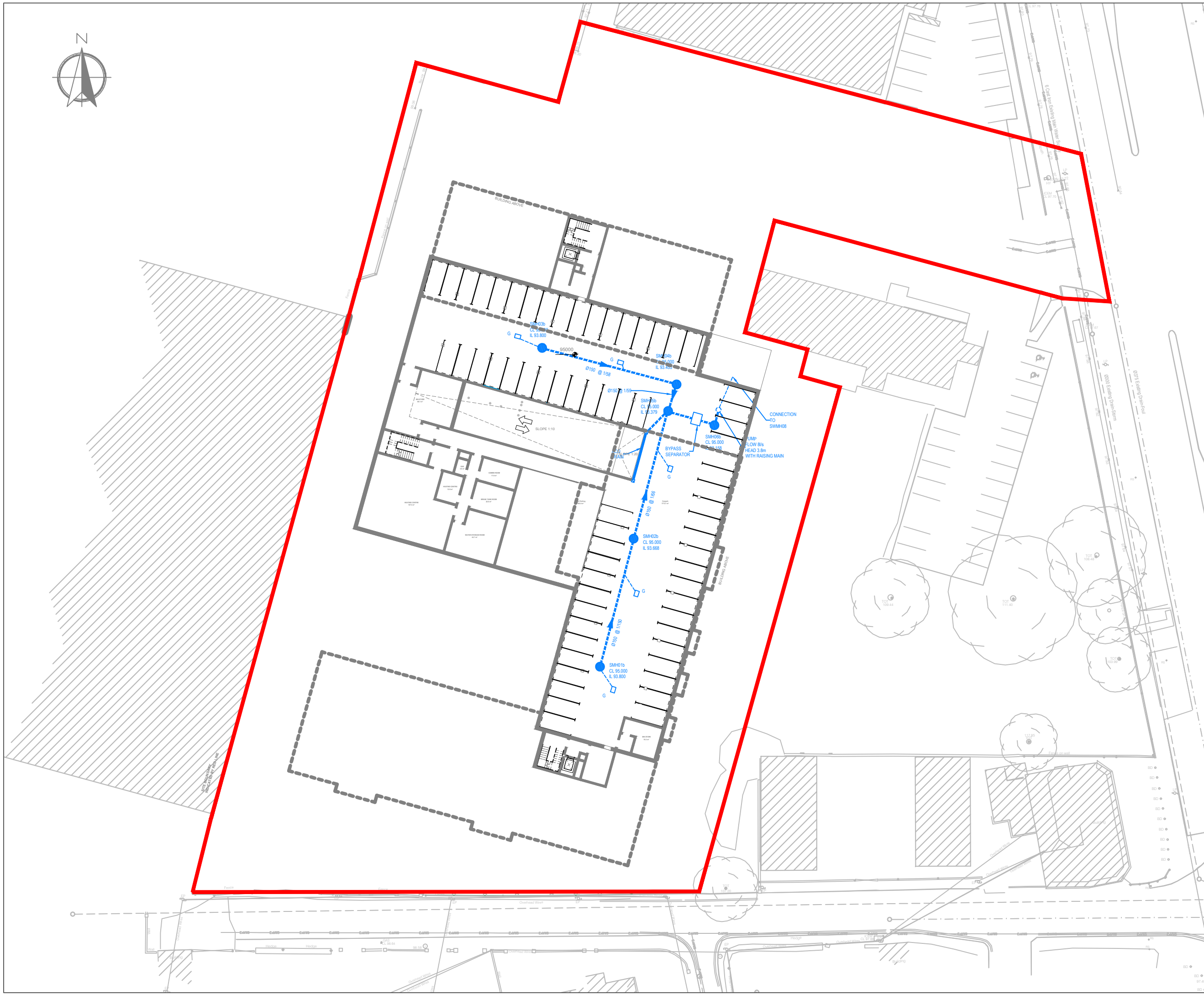


GENERAL NOTES:

1. THIS DRAWING IS TO BE READ IN CONJUNCTION WITH ALL RELEVANT ARCHITECTS AND ENGINEERS DRAWINGS AND SPECIFICATIONS.
2. DO NOT SCALE THIS DRAWING. ANY AMBIGUITIES, OMISSIONS AND ERRORS ON DRAWINGS SHALL BE BROUGHT TO THE ENGINEERS ATTENTION IMMEDIATELY. ALL DIMENSIONS MUST BE CHECKED / VERIFIED ON SITE.
3. ALL DIMENSIONS ARE IN MILLIMETRES UNLESS NOTED OTHERWISE.
4. FOR GENERAL NOTES REFER TO DRAWING.

LEGEND

-  PROPOSED SURFACE WATER MANHOLE/SEWER
-  SITE SUBJECT TO PLANNING APPLICATION



P01	ISSUED FOR PLANNING	11.12.20	GS	DH
Rev:	Description:	Date:	By:	Chkd:



11 Pembroke Lane, Dublin 2, D02 CX82
 +353 (0)1 507 9442
 dublin@curtins.com
 www.curtins.com

Civils & Structures • Transport Planning • Environmental • Infrastructure • Geotechnical • Conservation & Heritage • Principal Designer
 Birmingham • Bristol • Cambridge • Cardiff • Dublin • Edinburgh • Glasgow • Kenton • Leeds • Liverpool • London • Manchester • Nottingham

Status: **ISSUED FOR INFORMATION** S2

Project: **GLEN ABBEY**

Dig Title: **PROPOSED BASEMENT SURFACE WATER LAYOUT**

Size:	Date:	Drawn By:	Designed By:	Checked By:
A3	12/11/20	GS	GS	DH
Scale:	1:500			
Project No.:	Originator:	Volume:	Level:	Type:
072414 - CUR - 00 - XX - DR - C -				
90013 - P01				

072414 - CUR - 00 - XX - DR - C - 90013 - P01

V:\A3\07\Projects\072414 - Glen Abbey\04-Production\A-Main\Drawings\CAD\DR