

Luminaire Data
 Luminaire A Veelite Metro Streetlight 28w LED Street Optic R03 Lamp 12LED 4000K MF 0.76
 Luminaire B Veelite Metro Streetlight 28w LED Forward Throw Optic Lamp 12LED 4000K MF 0.76



Luminaire C Veelite Quad Series 36w LED Symmetric Lamp 16LED 4000K MF 0.76
 Luminaire E Veelite Quad Series 19w LED Street Optic R03 Lamp 8LED 4000K MF 0.76

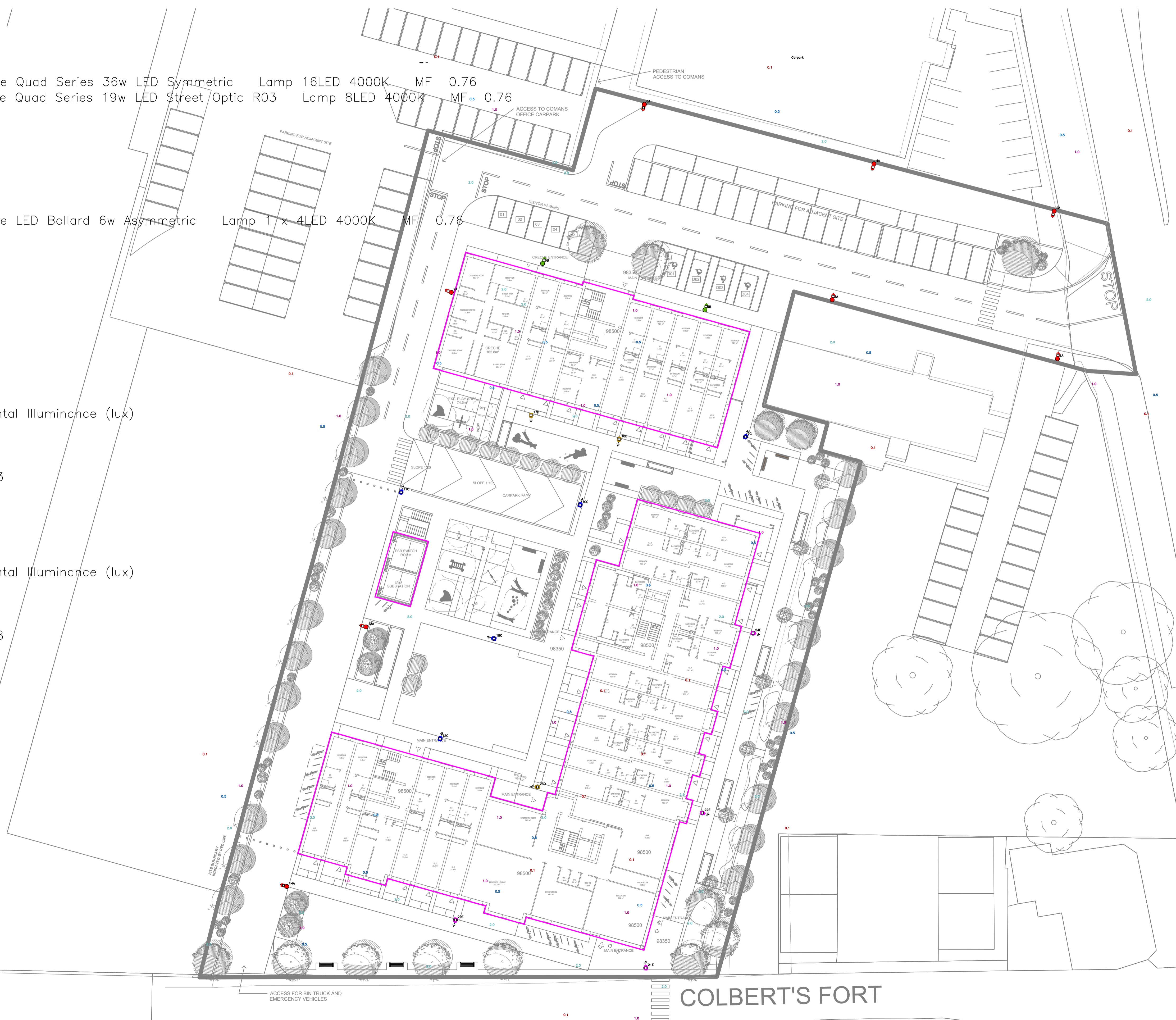


Luminaire D Veelite LED Bollard 6w Asymmetric Lamp 1 x 4LED 4000K MF 0.76



Road / Paths
 Results – Horizontal Illuminance (lux)
 Eav= 7.05
 Emin= 1.03
 Emax= 29.64
 Emin/Emax= 0.03
 Emin/Eav= 0.15
 Emax/Eav= 4.20

Carpark
 Results – Horizontal Illuminance (lux)
 Eav= 6.56
 Emin= 1.63
 Emax= 20.35
 Emin/Emax= 0.08
 Emin/Eav= 0.25
 Emax/Eav= 3.10



GENERAL NOTES
 ANY DISCREPANCIES OR OMISSIONS TO BE REPORTED TO JAK CONSULTING ENGINEERS IMMEDIATELY.
 DO NOT SCALE - WORK FROM FIGURED DIMENSIONS ONLY.
 THIS DRAWING IS TO BE READ IN CONJUNCTION WITH ALL CIVIL ENGINEERS, STRUCTURAL ENGINEERS, ARCHITECTS & ALL OTHER RELEVANT DRAWINGS & SPECIFICATIONS RELATING TO THE PROJECT.
 ALL DIMENSIONS TO BE CONFIRMED ON SITE.
 THIS DRAWING IS THE PROPERTY OF JAK CONSULTING ENGINEERS AND IT OR ITS CONTENTS CANNOT BE COPIED, REPRODUCED OR OTHERWISE USED WITHOUT THE PERMISSION & CONSENT OF JAK CONSULTING ENGINEERS. ©

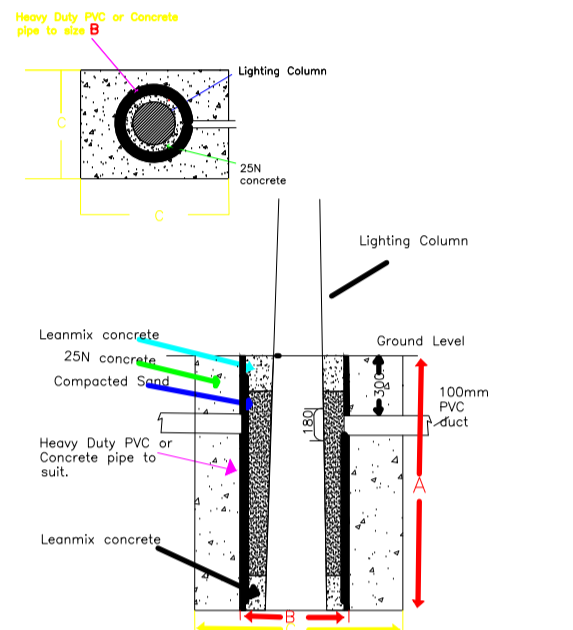
Luminaire Schedule

- Luminaire A Column
- Luminaire B Column
- Luminaire C Column
- Luminaire D Column
- Luminaire E Column

PUBLIC LIGHTING PILLAR (LOCATED 2M FROM ESB PILLAR)

Typical Base detail, to be checked by site engineers.

COLUMN MOUNTING HEIGHT	1.2m (10m) Min. 6m.
COLUMN ROOT DEPTH	1.8m-1.7m-1.5m-1.0m
CABLE ENTRY DEPTH	0.3m-0.3m-0.3m-0.3m
FOOTING CONCRETE DEPTH	1.0m-1.0m-1.0m-1.0m
COLUMN DOOR HEIGHT	1.0m-1.0m-1.0m-1.0m
COLUMN SLEEVE SIZE (mm) Internal	400 400 400 400
EXCAVATION (width x length)	1000 800 600 400



14	PLANNING ISSUE	MD	JK	
13	PLANNING ISSUE	MD	JK	25-01-2021
12	INFORMATION	NM	MD	19-08-2019
11	DRAFT	MD	MD	01-08-2019
REV	Description	DRN	APP	Date



PROJECT CLIENT:
 GLEN ABBEY RESIDENTIAL DEVELOPMENT

ARCHITECT:
 CWD ARCHITECTURE
 1 BARSFIELD QUAY, DUBLIN 7

DRAWING TITLE:
 ELECTRICAL SITE SERVICES
 STREET LIGHTING LAYOUT

DRAWING REFERENCE: J578@-01.dwg	DRAWING PROJECT STATUS: INFORMATION	REVISION REF: 14
FILENAME: J578@-01	DATE: 30-07-19	SCALE @ A1: 1:250

COLBERT'S FORT